

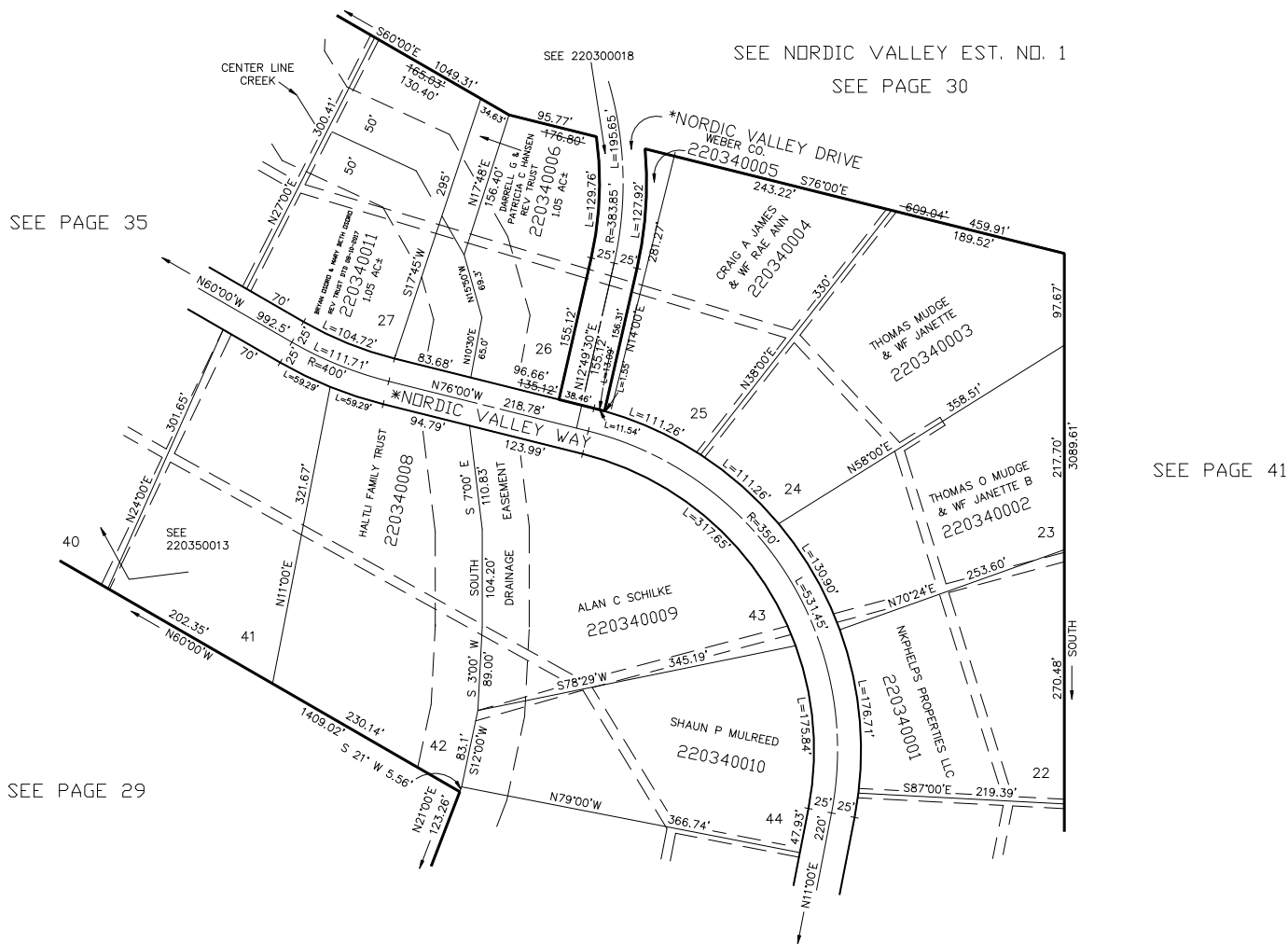
SILVER BELL ESTATES NO.1

LOTS 22 - 27 & 41 - 44

TAXING UNIT: 28

IN WEBER COUNTY

SCALE 1" = 100'



ALL UTILITY EASEMENTS ARE 10
FEET WIDE.
THE DRAINAGE EASEMENT IS 100
FEET WIDE.

FOR COMPLETE ENG DATA SEE
ORIGINAL DEDICATION PLAT IN
BOOK 12, PAGE 90 OF RECORDS.

ALL ROADS IN THE SUBDIVISION
ARE OWNED BY WEBER COUNTY
SEE 22-032-0028

*NOTE: STREET NAME ACCORDING
TO COUNTY SURVEYOR'S OFFICE

FOR TAX PURPOSES ONLY